



ELLIE
LED DOWNLIGHTER

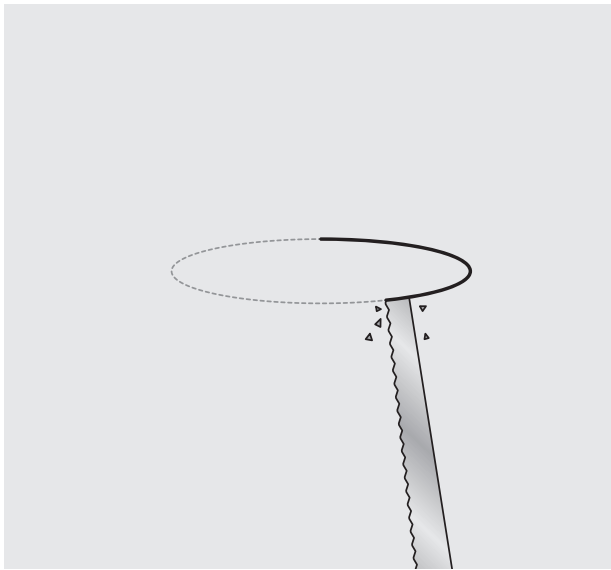
Installation instructions



Innovation.
Collaboration.
Illumination.

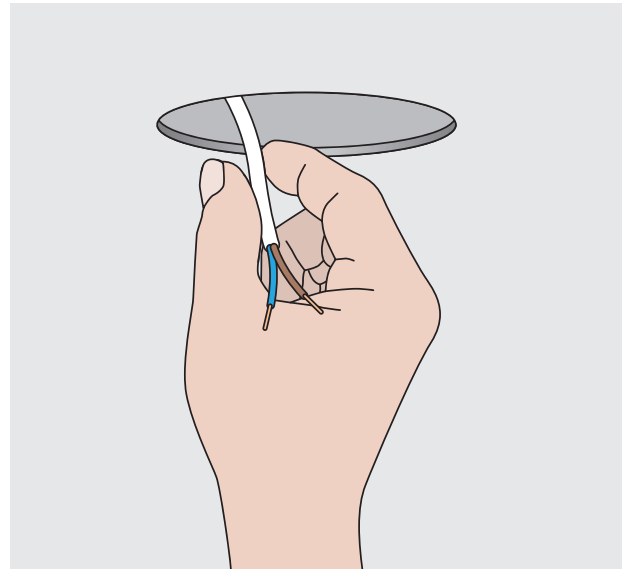
ELLIE - LED DOWNLIGHTER

Installation instructions

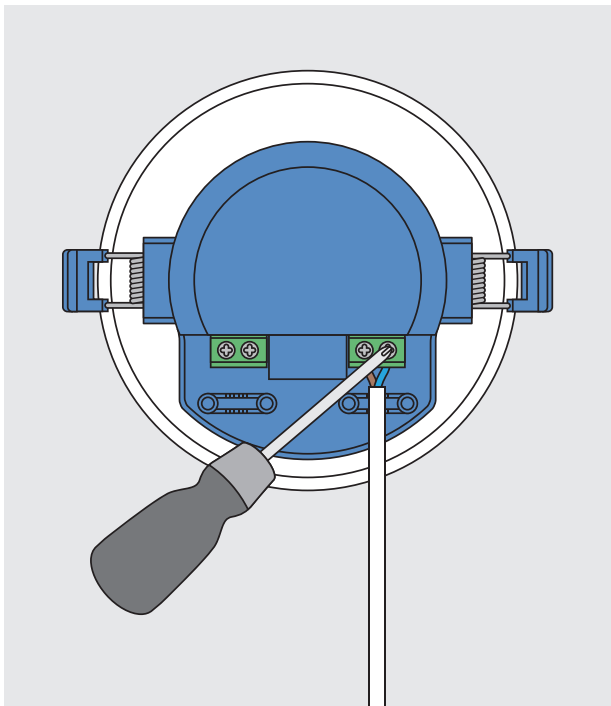


Cut circular hole

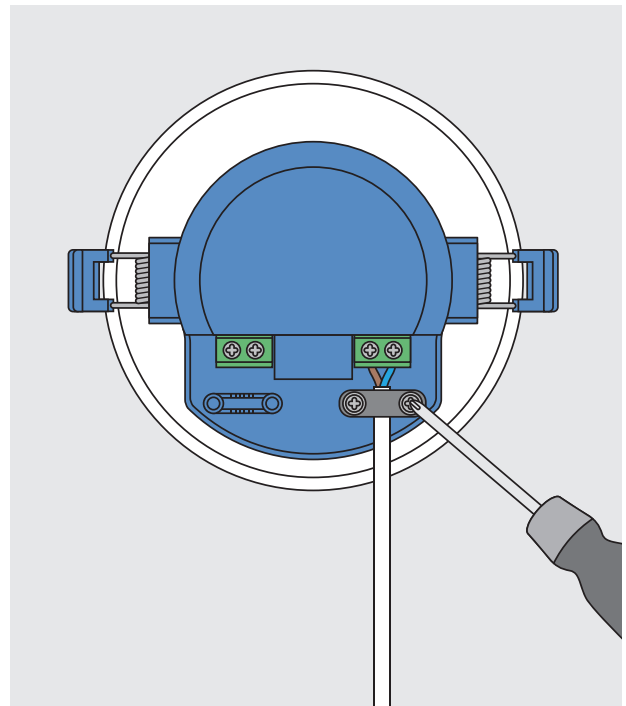
ELLIE 1 \varnothing 100mm
ELLIE 2 \varnothing 145mm
ELLIE 3 \varnothing 210mm



Pull cable through hole



Screw live and neutral wires into the terminals



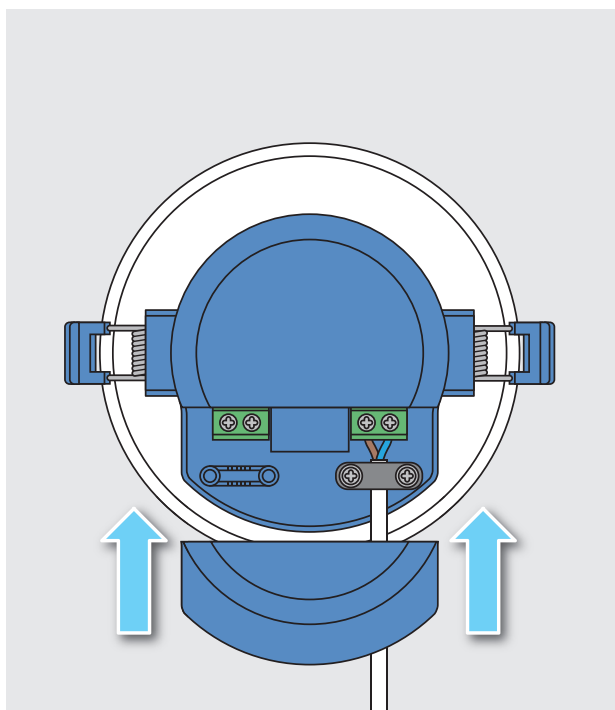
Screw down cable strain relief

Innovation.
Collaboration.
Illumination.

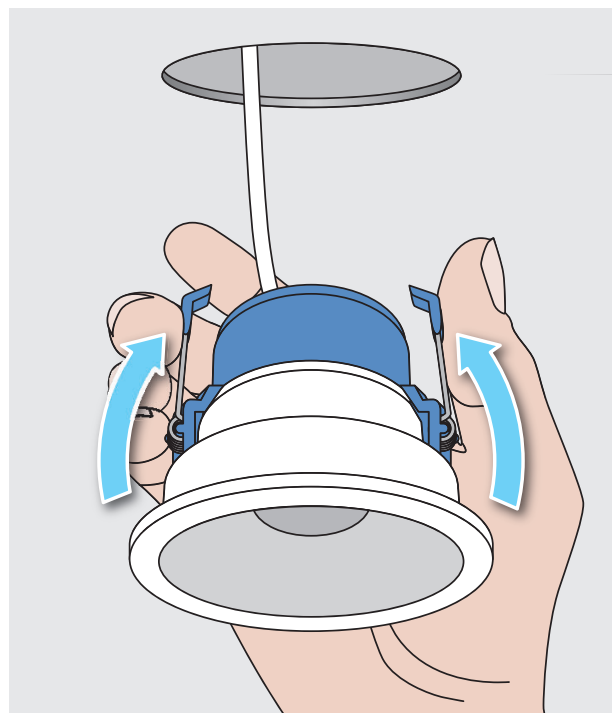


ELLIE - LED DOWNLIGHTER

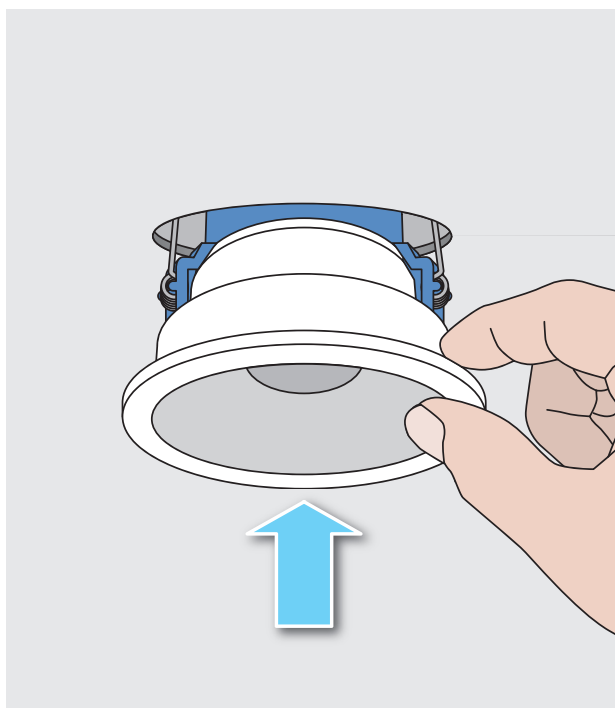
Installation instructions



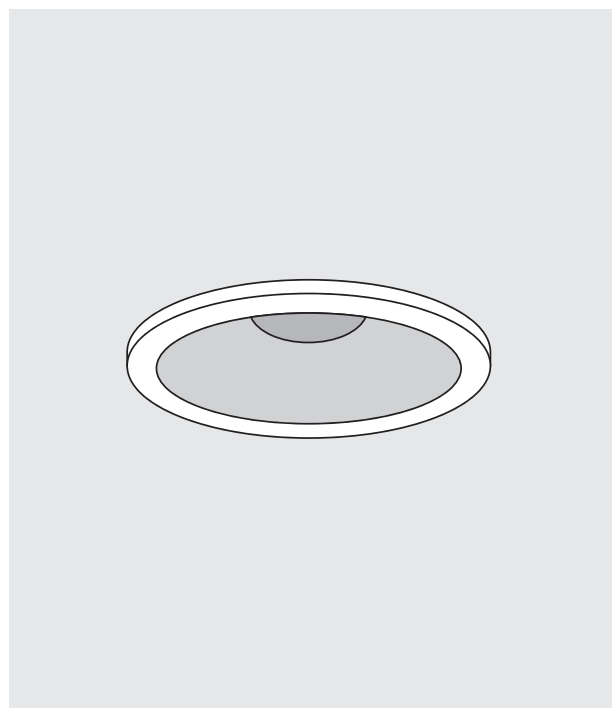
Fit terminal cover



Lift the springs



Insert the fitting into the hole



Push up to fit