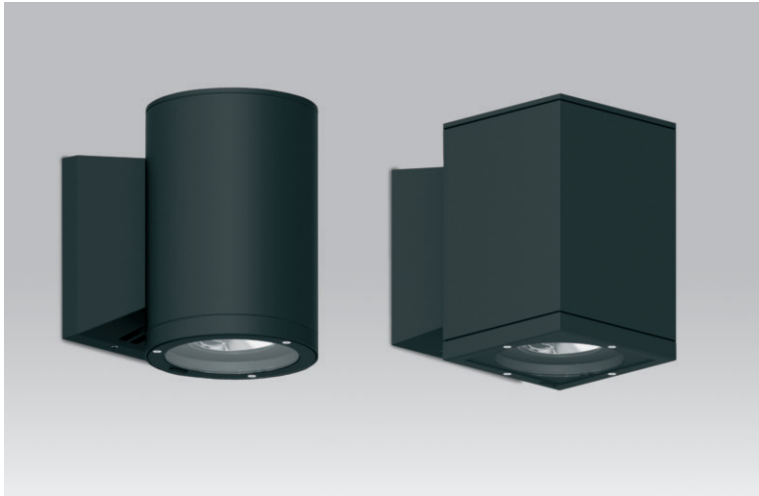


Outdoor Lighting



Overview

The Tubus LED range of luminaries are IP65 rated as standard and suitable for both internal and external applications.

There are round or square options available suitable for ceiling or wall mounting with various optics and two colour temperatures are available.

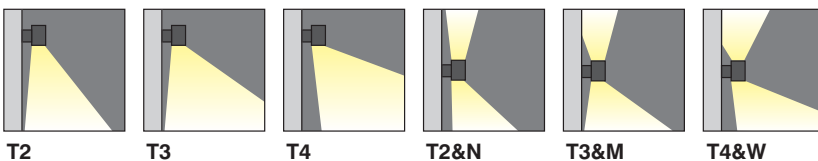
The die-cast aluminium housing is available in a variety of finishes with stainless steel screws as standard and transparent tempered glasses are fitted as standard.

Options

- For 3000K suffix /3
- For 4000K suffix /4
- For T2 optic suffix /T2
- For T3 optic suffix /T3
- For T4 optic suffix /T4
- For DALI dimmable suffix /DIM
- For a Black 9011 finish suffix /BLK
- For a Dark Grey 7043 finish suffix /GRY
- For a White 9003 finish suffix /WHI
- For a Silver 9006 finish suffix /SLV
- For a Bronze 6014 finish suffix /BRZ

i.e. **TUB/C/3/T3/BLK** = Tubus Led, Round Wall Mounted, Direct/In-Direct, 58W, 5083 Lumens, 3000K, Black finish.

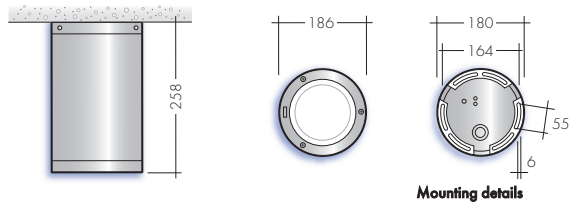
Optics available



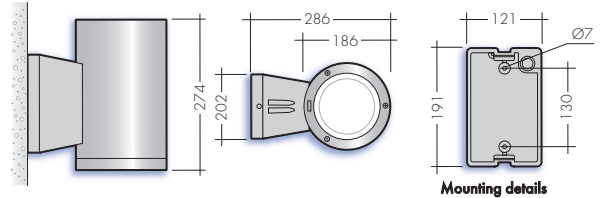
Key features

- IP65 suitable for internal environments
- Impact rating of IK08
- Efficacy of up to 94lm/W
- Nominal life-time of 92,000 h (L80/B10)
- Colour stability with 3 step MacAdam
- Weight = 6.4kg
- Operating temperature: -20 °C to 40 °C

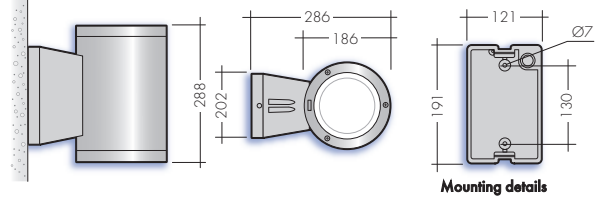
Size A - Direct



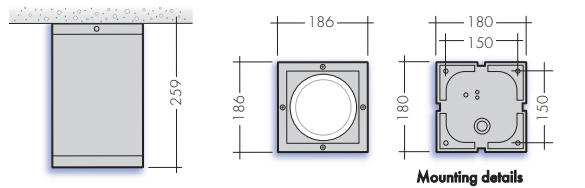
Size B - Direct



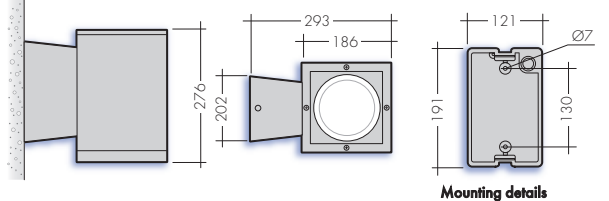
Size C - Direct/In-direct



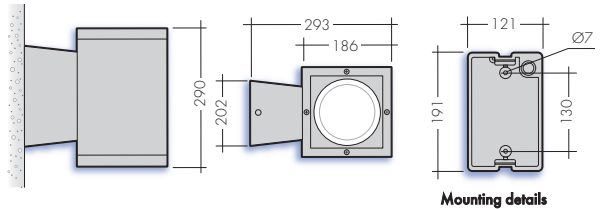
Size D - Direct



Size E - Direct



Size F - Direct/In-direct



Part No.	Wattage	Lumens	Weight
TUB/A	37	2777	3.7kg
TUB/B	37	2777	4.4kg
TUB/C	58	5083	6.4kg
TUB/D	37	2777	4.5kg
TUB/E	37	2777	6.5kg
TUB/F	58	5083	6.5kg